



School Sustainability Study  
Public Presentation



# Preferred Option



A new Kindergarten to Grade 8 (K-8) school be constructed in Town.

The new K-8 facility would replace the Florenceville Elementary School, Bristol Elementary School and the Florenceville Middle School.

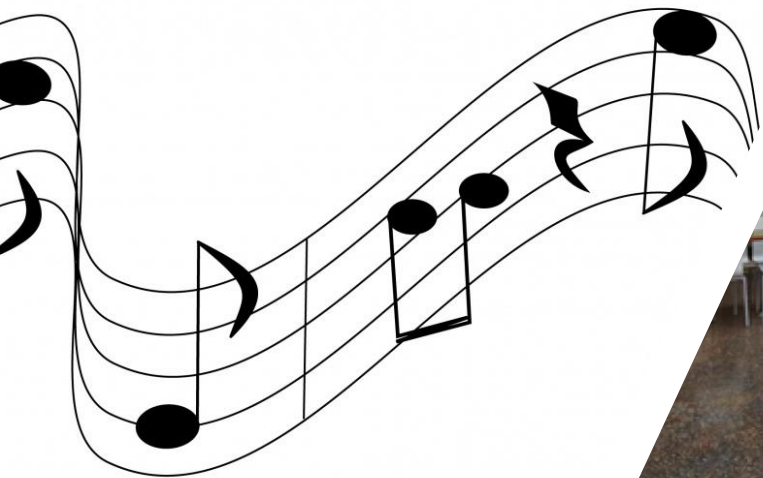
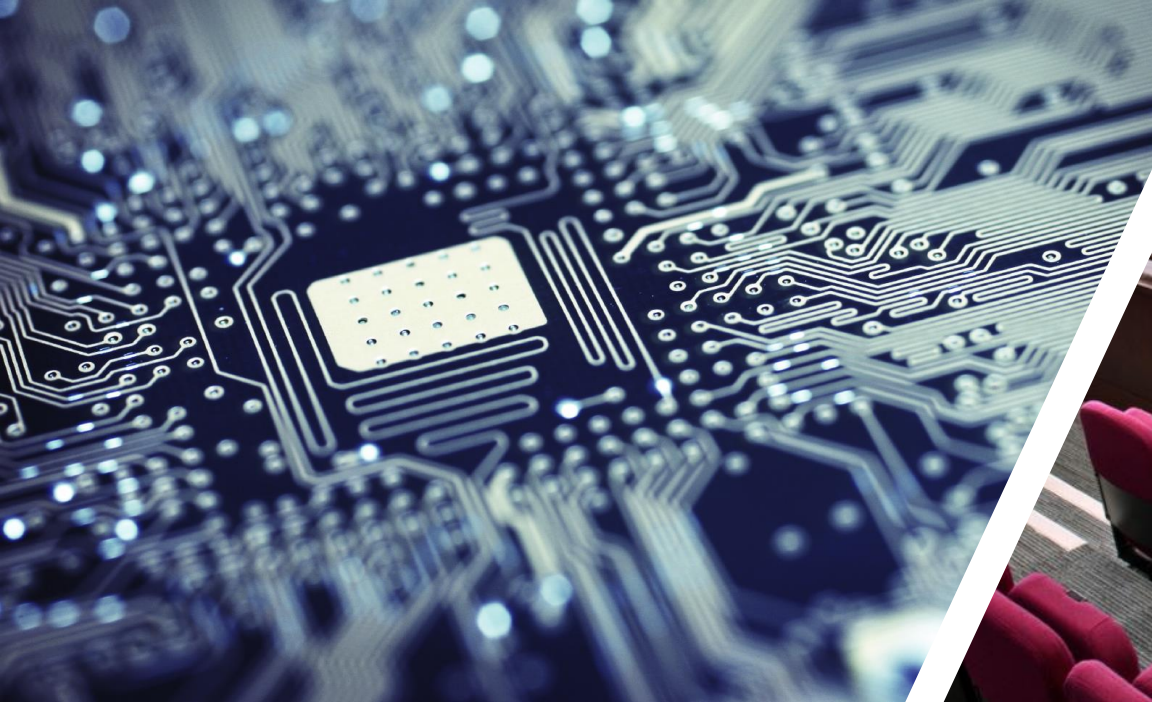


# Location

Locate next to the existing Carleton North High School.

Combine resources to create a learning campus.

Nearly 22 hectares available.



# Accessibility

Make it accessible, so students with disabilities can enjoy the same social and educational experiences as their peers.

Accessibility for friends and family with disabilities, so they can see their loved ones participate in school activities.



# Youth Socialization



The learning campus would be a center for youth socialization and activity.

Creates a strong community that helps residents form relationships with their neighbours.

The improved accessibility and shared athletic spaces would help create a more cohesive community.

# Utilities Expenditures

School	2016-17 cost per square metre
Florenceville Elementary School	\$35.93
Bristol Elementary	\$26.25
Florenceville Middle School	\$22.94
Meduxnekeag Consolidated School	\$15.23



# Bussing Costs

There would also be an opportunity for reduced bussing costs if students from all areas were being bussed to the Carleton North High School and the adjacent K-8 school.

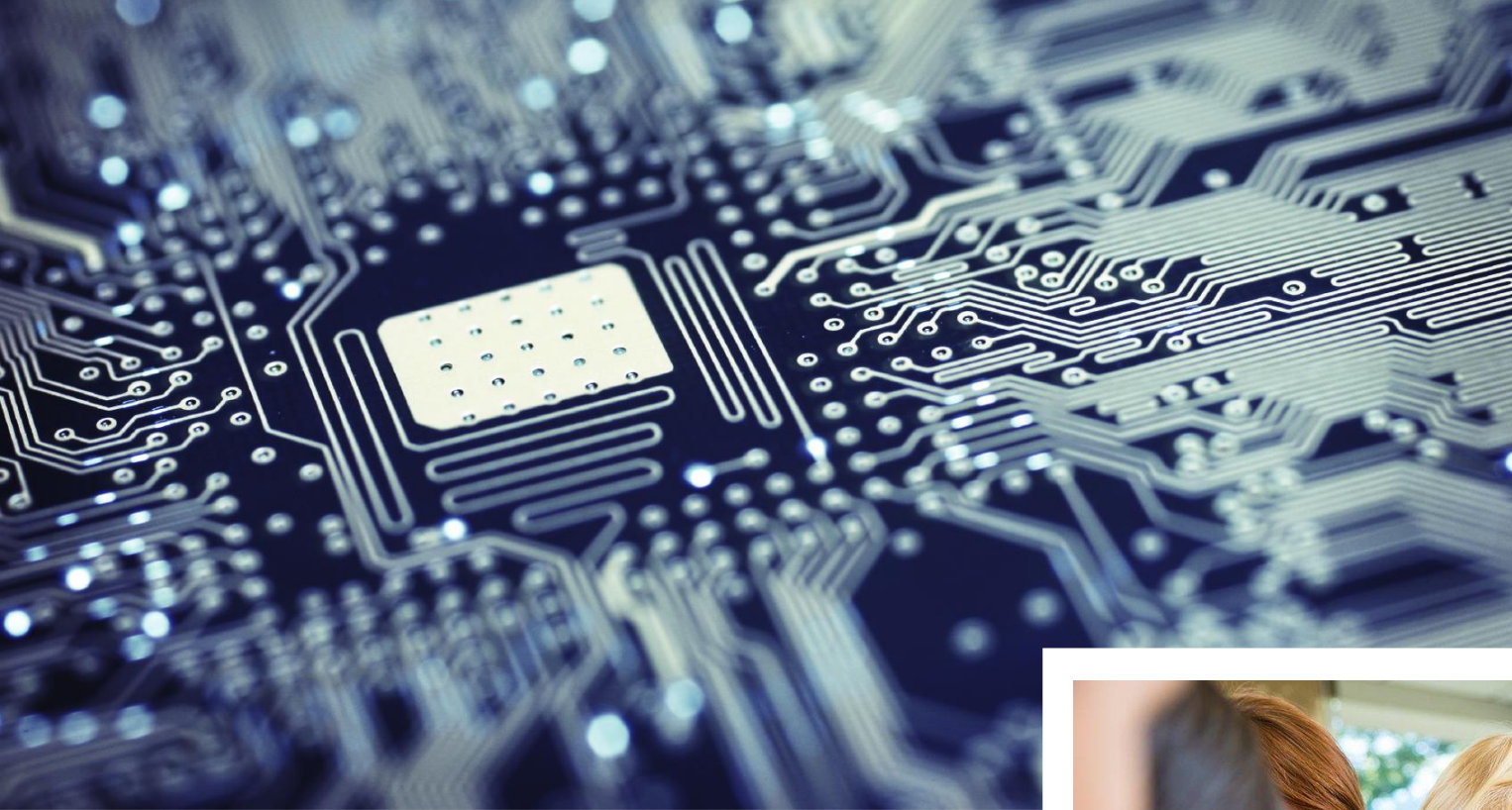


# Safe and Healthy Learning Environment



# School Amenities

- ▶ Classrooms
- ▶ Rooms for music, art, science and technology, resource/special care, guidance
- ▶ Project work areas
- ▶ Cafeteria or cafetorium
- ▶ Community Kitchen
- ▶ Library / media centre
- ▶ Two gymnasiums
- ▶ Community room
- ▶ Multi-purpose rooms
- ▶ Early-childhood learning space
- ▶ Theatre / Performance space





CLASSROOM RULES!  
LEARN THE BIG  
WORK HARD  
CLASSROOM RULES

CAUTION  
Hot Surface  
Do Not Touch



SOUND BEGINNING S  
IN PHRASES  
I USE MY SOUND  
IN SENTENCES

SOUND WHEN I TALK OUTSIDE THE THERAPY ROOM

December

1	2	3	4	5	6
7	8	9	10	11	12
13	14	15	16	17	18
19	20	21	22	23	24
25	26	27	28	29	30
31					

Kids are special

WELLINGTON  
WELLINGTON



















# Enrollment

School	2018 Enrollment
Florenceville Elementary School	224
Bristol Elementary	97
Florenceville Middle School	207
<b>Total Enrollment in Florenceville-Bristol:</b>	<b>528</b>
Townsvie School	579
Meduxnekeag Consolidated	623





# Full-time Equivalents (FTE) by School

	Florenceville Elementary	Bristol Elementary	Florenceville Middle	Total Florenceville- Bristol Schools	Townsvie	Meduxnekeag Consolidated
Enrollment	224	97	207	<b>528</b>	579	623
FTE Teacher	16.50	5.50	12.00	<b>34.00</b>	36.20	36.76
FTE Literacy Lead	0.00	0.00	0.00	<b>0.00</b>	0.00	0.00
FTE Guidance	0.50	0.20	0.50	<b>1.20</b>	1.00	1.50
FTE Resource	1.00	0.50	1.00	<b>2.50</b>	3.00	3.50
FTE Admin.	0.90	0.40	0.90	<b>2.20</b>	2.40	2.50
FTE Education Asst	4.00	1.00	1.00	<b>6.00</b>	15.00	24.00
FTE Library Assistant	0.23	0.17	0.27	<b>0.67</b>	0.61	0.63
FTE Admin. Asst	1.00	1.00	1.00	<b>3.00</b>	1.76	1.76
FTE Custodian	1.71	0.85	2.20	<b>4.76</b>	5.50	4.50
FTE Other	0.20	0.40	0.10	<b>0.70</b>	0.10	0.24





EFFICIENCY

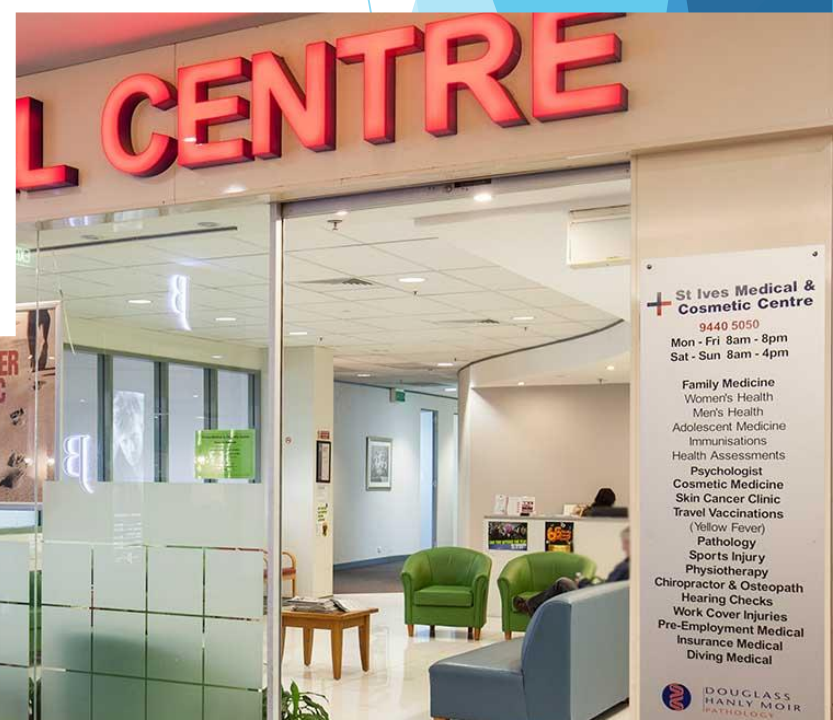
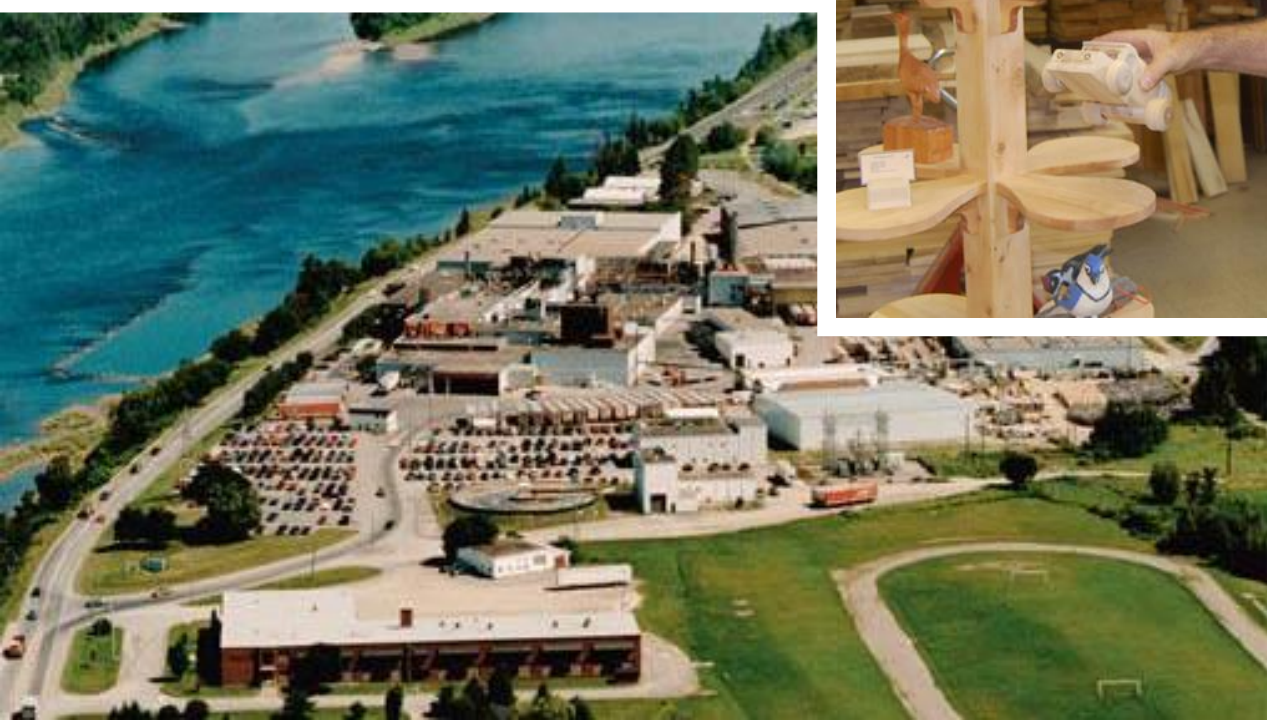
COST

QUALITY



## Attracting New Residents

When recruiting new residents, having a new and complete learning facility is an important consideration for families.



**St Ives Medical & Cosmetic Centre**  
9440 5050  
Mon - Fri 8am - 8pm  
Sat - Sun 8am - 4pm

- Family Medicine
- Women's Health
- Men's Health
- Adolescent Medicine
- Immunisations
- Health Assessments
- Psychologist
- Cosmetic Medicine
- Skin Cancer Clinic
- Travel Vaccinations (Yellow Fever)
- Pathology
- Sports Injury
- Physiotherapy
- Chiropractor & Osteopath
- Hearing Checks
- Work Cover Injuries
- Pre-Employment Medical
- Insurance Medical
- Diving Medical

**DOUGLASS HANLY MOIR**  
PATHOLOGISTS





Thank you